

## PARTNERSHIP PROFILE

Alluvial Fund, LP is dedicated to identifying and profiting from deeply mis-priced securities in the US and abroad. Alluvial Fund focuses on small firms, thinly-traded issues and special situations, seeking to identify value that the market has yet to notice. The partnership's goal is to compound its partners' capital at superior rates over the long term.

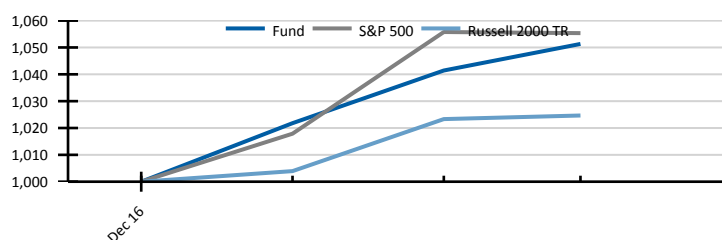
## MANAGER'S COMMENTARY

I am pleased to present performance figures for Alluvial Fund's first full quarter of operations. The year is off to a good start despite a high average cash balance as Alluvial Fund builds positions in attractive securities. At present, 26% of fund assets are invested outside the United States, as international markets continue to offer plentiful value opportunities. The partnership has taken positions in several very high-priced, thinly-traded OTC stocks. These companies are well-run and exceptionally cheap, and I expect them to contribute meaningfully to partnership returns in the long run.

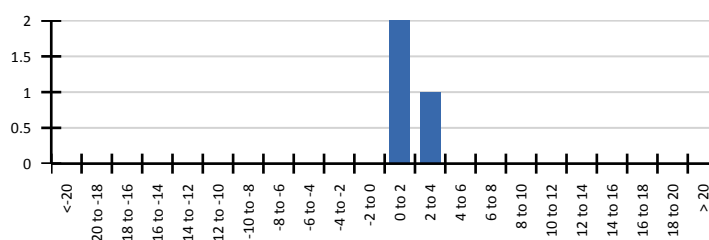
## MONTHLY PERFORMANCE

	Jan	Feb	Mar	Apr	May	Jun	Jul	Aug	Sep	Oct	Nov	Dec	YTD
<b>2017</b>	2.18	1.92	0.95										5.13

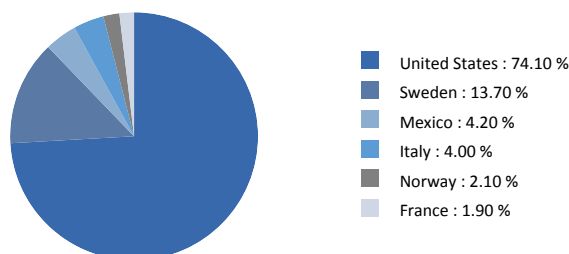
## VAMI (VALUE OF INITIAL \$1,000 INVESTMENT)



## DISTRIBUTION OF MONTHLY RETURNS



## World Allocation



## STATISTICS

	Fund	S&P 500	Russell 2000 TR
Number of Periods	3	3	3
Total Return	5.13%	5.53%	2.47%
Final VAMI Value	1,051.31	1,055.34	1,024.66
Last Month	0.95%	-0.04%	0.13%
YTD	5.13%	5.53%	2.47%
QTD	5.13%	5.53%	2.47%

## INVESTMENT TERMS

Minimum Investment	\$100,000
Management Fee	1.50%
AUM	\$3.3 million
Structure	Delaware LP
Performance Incentive	20% with 6% hurdle and high water mark
Lockup	1 year

## SERVICE PROVIDERS

Legal	Alston & Bird, LLP
Fund Administrator	NAV Consulting, Inc.
Auditor	Cohen & Company
Primary Execution	Interactive Brokers, LLC

## CONTACT INFORMATION

### Alluvial Capital Management, LLC

David Waters, CFA  
1833 Kleber Street  
Pittsburgh, PA 15212

E-Mail: info@alluvialcapital.com  
Phone: 412-368-2321  
Website: Alluvialcapital.com

## Performance Attribution

CRH Medical	0.8%
MMA Capital Management	0.4%
Rassini SAB de CV	0.4%
ALJ Regional Holdings	-0.2%
Syncora Financial	-0.4%
GTT Communications	-0.8%

## MANAGER BIO

Alluvial Fund, LP is a new partnership managed by Alluvial Capital Management, LLC. Since 2014, Alluvial has provided investing strategies with a focus on micro-caps, thinly-traded issues, and special situations using a traditional value investing framework.

Alluvial Capital Management, LLC's president is David Waters, CFA. Since 2012, Mr. Waters has published his independent research on obscure and under-followed securities at OTCAdventures.com. Mr. Waters' work history includes stints at BNY Mellon and Wilmington Trust.